



CAVALLI

CMB-FO STAINLESS STEEL PUMP

A centrifugal pump is a mechanical device designed to move a fluid by means of the transfer of rotational energy from one or more driven rotors, called impellers. Centrifugal pumps are often chosen for their high flow rate capabilities, abrasive solution compatibility, mixing potential, as well as their relatively simple engineering.

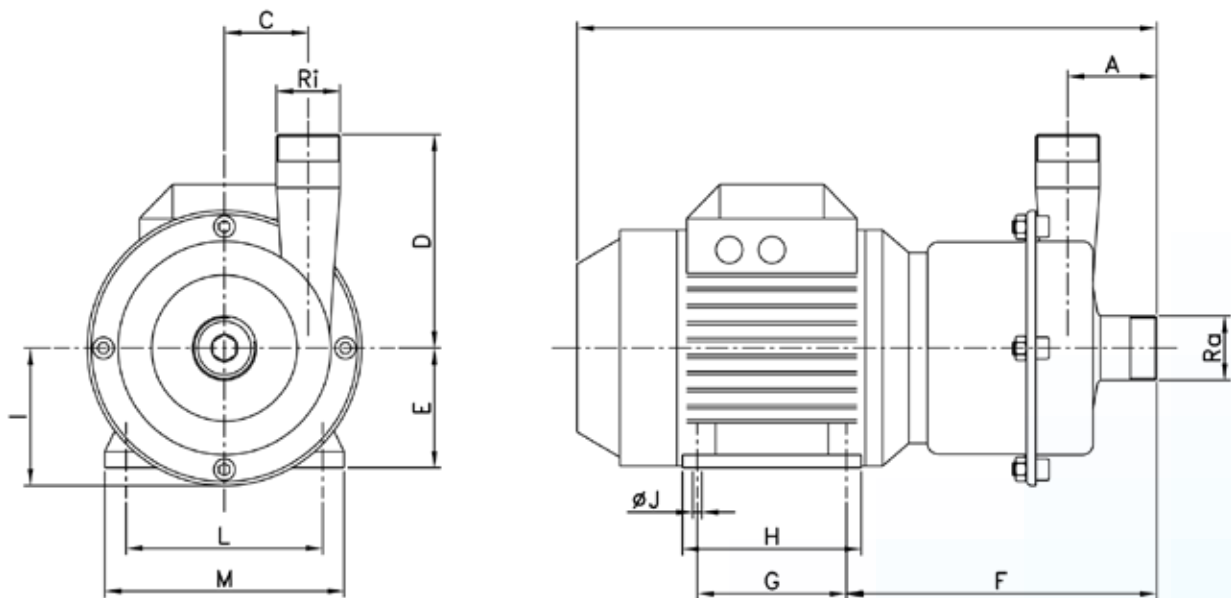
The CMB-FO series has been especially designed to comply with auxiliary services required by the food industry. The impeller is of open design and made of one single piece. Mechanical seal friction surfaces are ceramic, graphite and the NBR o-rings in the standard version.



OPTIONS

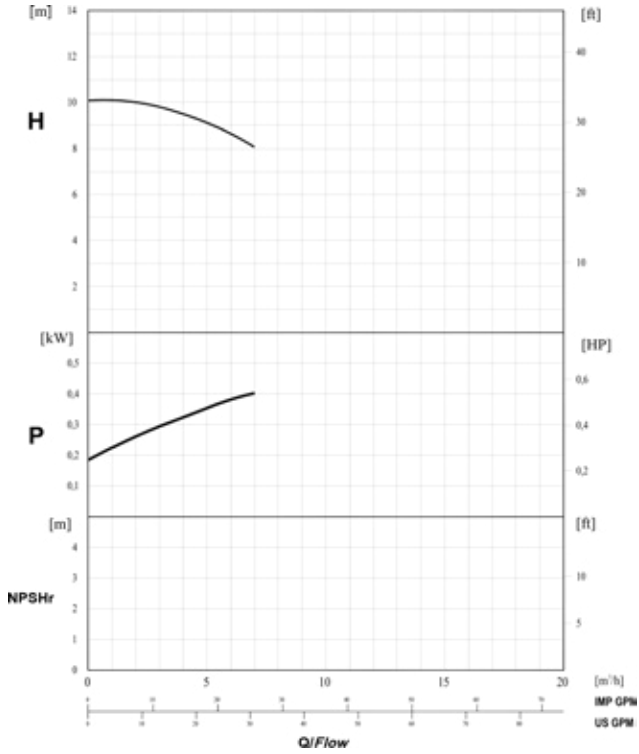
- Pump with stainless steel shroud
- Pump with trolley
- Control panel with stop/start, contactor and emergency stop push button

DRAWING & DIMENSIONS

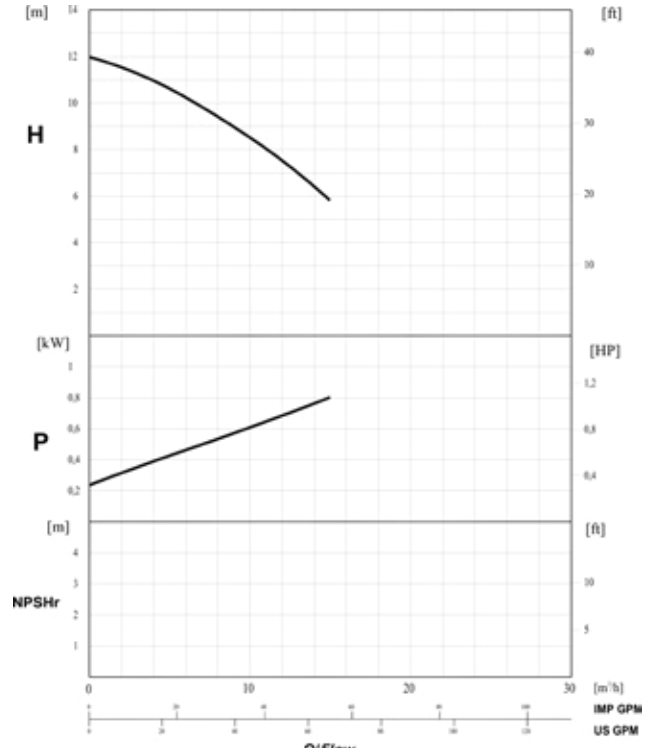


PUMP TYPE	MOTOR		RPM	GAS/BSP		A	B	C	D	E	F	G	H	I	ØJ	L	M
	TAM	kW		Ra	Ri												
CMB-FO 2003	71	0,37	2900	1"	¾"	60	360	36	100	71	193	90	105	73	7	112	132
CMB-FO 2107	80	0,75		1½"	1"	64	410	180	110	80	204	100	125	86	9	125	155
CMB-FO 2222	90L	2,2		1½"	1½"	67	470	66	160	90	227	125	155	103	10	140	180
CMB-FO 2222A																	
CMB-FO 2340	112	4					540			112	258		180	128		190	233
CMB-FO 2340B												140					
CMB-FO 2355	132	5,5		2"	2"	70	615	92	192	132	300		190	150	12	216	255
CMB-FO 2355A																	
CMB-FO 2375		7,5															
CMB-FO 2375A																	
CMB-FO 4002	71	0,25	1450	1"	¾"	60	360	36	100	71	193	90	105	73	12	112	132
CMB-FO 4105	80	0,55		1½"	1"	64	410	48	110	80	204	100	125	86	9	125	155
CMB-FO 4211	90S	1,1		1½"	1½"	67	445	66	160	90	227	100	125	103	10	140	180
CMB-FO 4211A																	
CMB-FO 4322	100	2,2		2"	2"	70	515	92	192	100	251	140	175	128	12	160	200
CMB-FO 4322A																	
CMB-FO 4322B																	

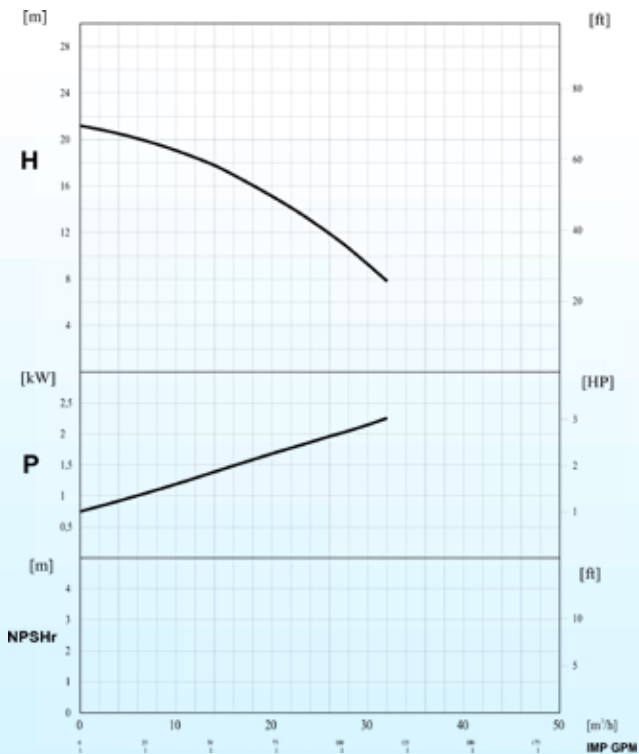
PERFORMANCE CURVES



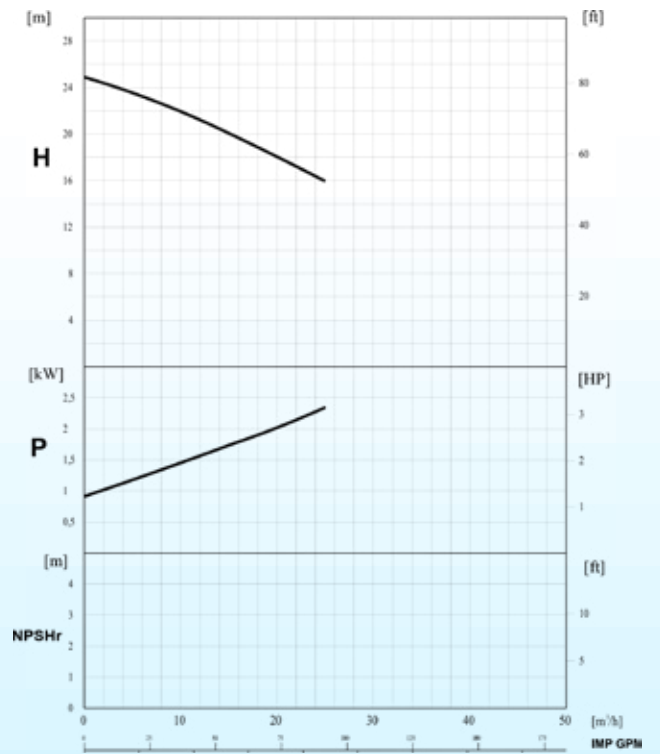
CMB-FO 2003



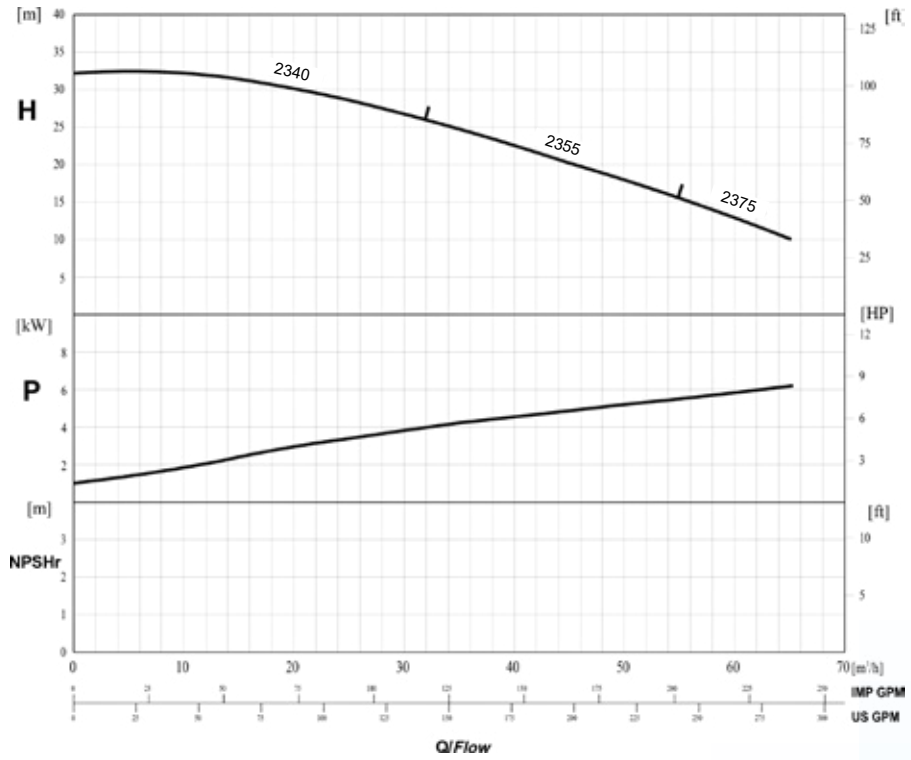
CMB-FO 2107



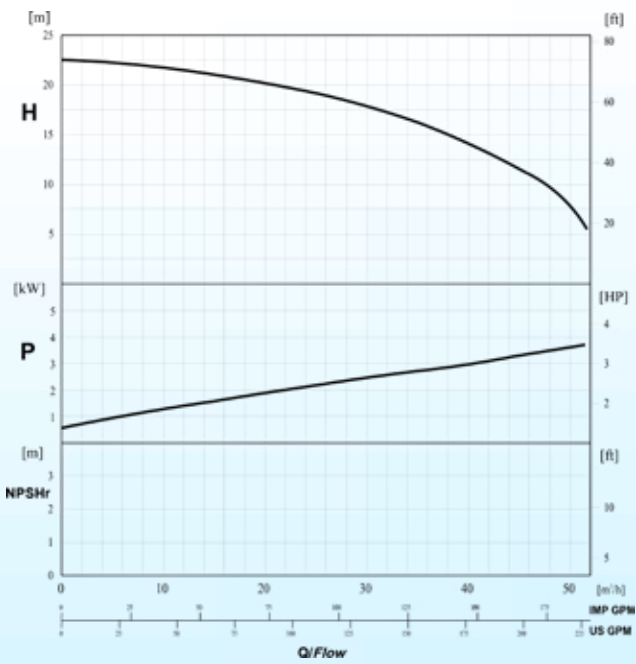
CMB-FO 2222



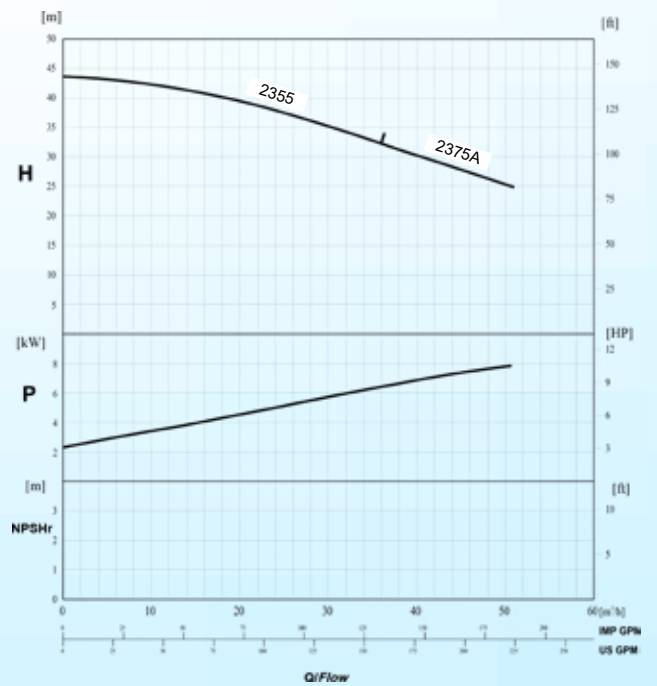
CMB-FO 2222A



CMB-FO 2340/2355/2375



CMB-FO 2340B



CMB-FO 2355A /2375A